



# MORNING MANTRA

WHAT'S RISING

BULLS

BEARS

WHAT'S FALLING

Daily Derivatives & Market Report

MAY 26, 2025



Local equity benchmarks extended their gains for a second consecutive session on Monday, with both the Nifty and Sensex closing over half a percent gains, as traders took some support amid the Reserve Bank of India's decision to pay Rs 2.68 lakh crore as a dividend to the central government for FY25. Markets made a gap-up opening and remained higher throughout the session, supported by broad-based buying across all sectoral indices.

Some of the important factors in today's trade:

**India becomes 4th largest economy:** Support came as NITI Aayog CEO BVR Subrahmanyam said that India has become the fourth largest economy in the world, overtaking Japan. He also added that the overall geopolitical and economic environment is favourable to India.

**GST council to meet soon to discuss rate rationalisation:** Traders took some support amid the Goods and Services Tax Council is expected to convene shortly in New Delhi. Discussions will focus on simplifying tax rates and rationalisation. The future of the compensation cess will also be addressed.

**FII's turn net buyers:** Foreign Institutional Investors (FIIs) bought equities worth Rs 1,794.59 crore on Friday, according to exchange data.

**Global front:** European markets were trading in green as U.S. President Donald Trump delayed the roll out of 50 percent tariffs on the European Union to July 9 from June 1. Asian markets ended mostly in red as Japan's leading index decreased less than initially estimated in March to the lowest level in three months.

# MARKET SELFIE



## MARKET SUMMARY

Domestic Indices	Close	Points	% Change
SENSEX	82176.46	455.38	0.56
NIFTY	25001.15	148.00	0.60
MIDCAP	45111.47	250.05	0.56
SMLCAP	51766.72	245.30	0.48
BSEFMC	20851.54	192.36	0.93
HEALTHCARE	42662.69	148.48	0.35
AUTO	53291.09	546.13	1.04
POWER	6848.42	41.71	0.61
REALTY	7310.11	54.48	0.75
BSE IT	37289.95	351.84	0.95
BANKEX	63135.78	173.28	0.28
OIL GAS	27402.32	182.05	0.67
METAL	31391.89	271.36	0.87
INDIA VIX	18.02	0.74	4.28

## ADVANCE - DECLINE

Index	Advance	Decline	Unchanged
NSE	1939	1029	41
BSE	2299	1773	195

## MARKET TURNOVER (₹ in Crs)

Segment	Current	Previous	Net %
BSE CASH	6775	7552	(10)
NSE CASH	93170	95245	(2)
NSE F&O	371734	211411	76

## KEY INDICES RATIOS

INDEX	P/E	P/B	Dividend Yield
NIFTY	22.58	3.70	1.09
SENSEX	22.99	4.23	0.94

# KEY NUMBERS TRACKER



## FII – DII ACTIVITY IN CASH SEGMENT (₹ in Crs)

FII-DII*	Buy	Sell	Net
DII	10545	8799	1746
FII	9081	8945	136

Note: FPI & DII Figures are provisional

## FII ACTIVITY IN DERIVATIVES SEGMENT (₹ in Crs)

FII	Buy	Sell	Net
Index Futures	6711.44	6146.24	565
Index Options	880061.84	837345.95	42716
Stock Futures	136735.97	134574.93	2161
Stock Options	89516.06	82458.65	7057

## PUT-CALL RATIO

Index	Current	Previous
NIFTY	1.06	1.09
BANK NIFTY	0.89	0.90

## DOLLAR INDEX

Dollar Index	Current	Previous	% Change
DXY	99.02	99.89	-0.87

## 10-YEARS G-SEC YIELD

Country	Current	Previous	% Change
INDIA	6.222	6.231	-0.14
USA	4.548	4.513	0.78

## KEY COMMODITIES TRACKER (in \$)

Commodity	Current	Change Points	% Change
Gold	3331..97	-22.09	-0.66
Silver	33.34	-0.06	-0.18
Crude-Oil	61.59	0.06	0.10
Brent-Crude	64.87	0.09	0.14

# CURRENCY FUTURES & INDEX TRENDS TRACKER



CURRENCY FUTURES			
Expiry	Close	Change Points	% Change
28 MAY-25 USD-INR	85.10	-0.24	-0.28
28 MAY-25 EUR-INR	96.90	-0.02	-0.02
28 MAY-25 GBP-INR	115.45	0.20	0.17
28 MAY-25 JPY- INR	59.91	0.25	0.41

INDICES – SUPPORT-RESISTANCE-PIVOT LEVELS						
Index	Close	S2	S1	Pivot	R1	R2
NIFTY	25001	24815	24908	24994	25087	25172
SENSEX	82176	81554	81865	82179	82490	82804
NIFTY FUTURES	25036	24843	24939	25032	25128	25220
BANK NIFTY	55572	55017	55294	55585	55863	56153
CNX IT	37786	37306	37546	37683	37923	38060
CNX MIDCAP	57067	56685	56876	57045	57236	57405
CNX SMALLCAP	17708	17594	17651	17727	17783	17859
INDIA VIX	18.02	15.15	16.58	17.50	18.93	19.85

INDEX TREND ANALYSIS			
Index	Daily	Weekly	Monthly
NIFTY	Buy	Buy	Buy
SENSEX	Buy	Buy	Buy
NIFTY FUTURES	Buy	Buy	Buy
BANK NIFTY	Buy	Buy	Buy
CNX IT	Buy	NEUTRAL	NEUTRAL
CNX MIDCAP	Buy	NEUTRAL	NEUTRAL
CNX SMALLCAP	Buy	NEUTRAL	NEUTRAL
INDIA VIX	Buy	NEUTRAL	SELL

SECURITIES BAN IN F&O TRADES FOR 27-05-2025
CHAMBLFERT, HINDCOPPER, MANAPPURAM, RBLBANK, TITAGARH



# TECHNICAL VIEWS



## NIFTY

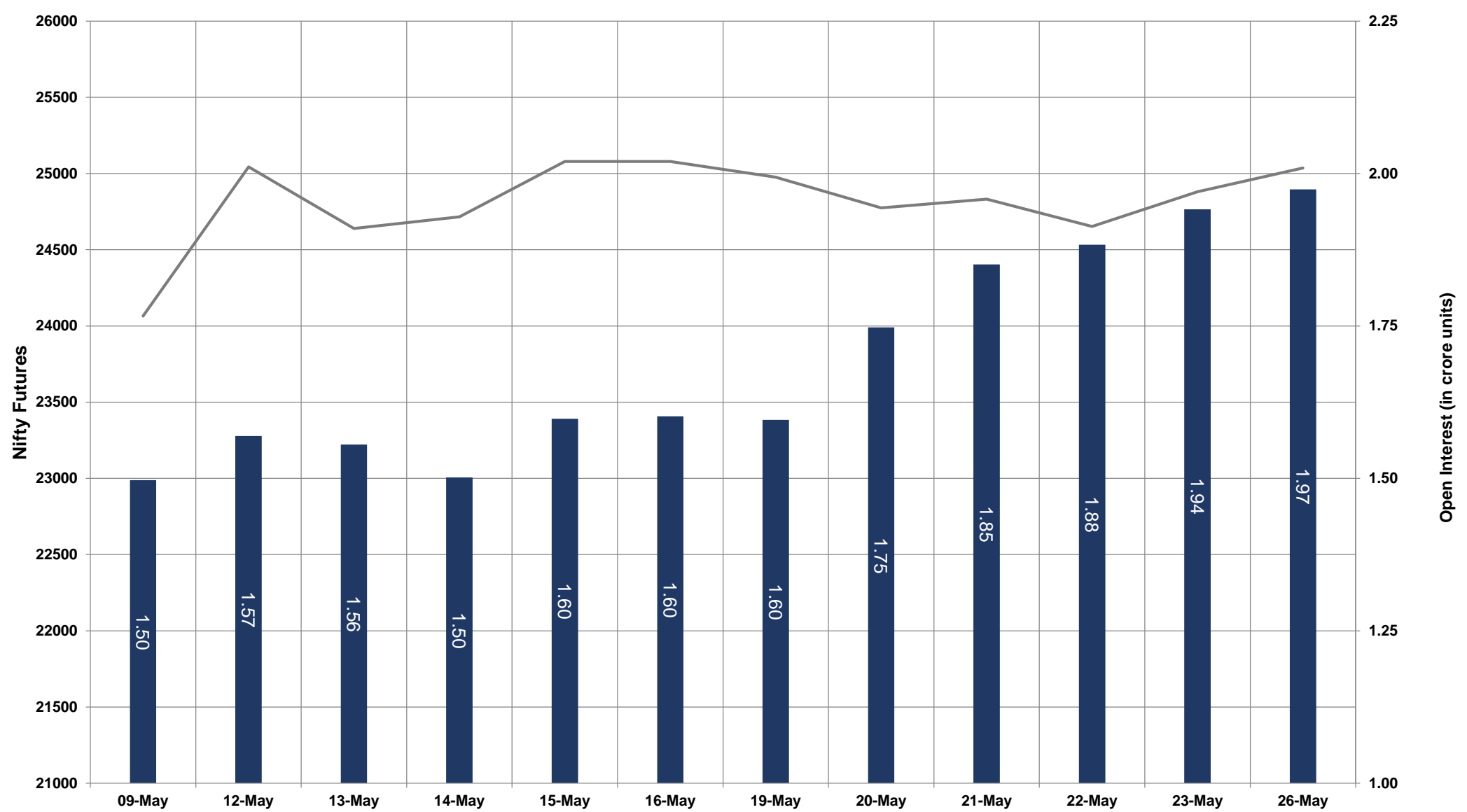


- Nifty Cash = **25001.15 (0.60%)**
- Resistance levels = **25100** and **25250**
- Support levels = **24870** and **24800**

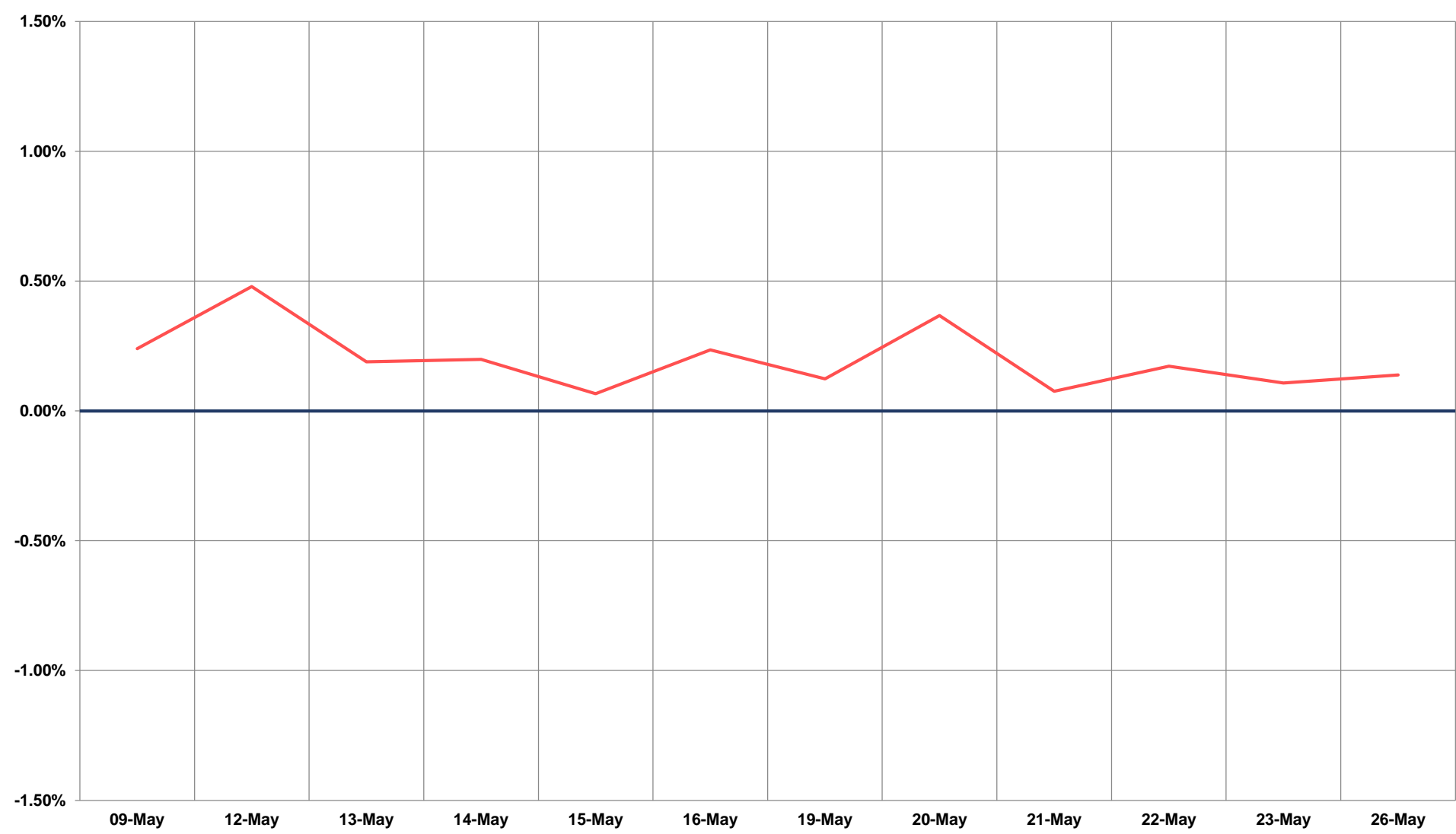
# TECHNICAL VIEWS



## NIFTY FUTURES



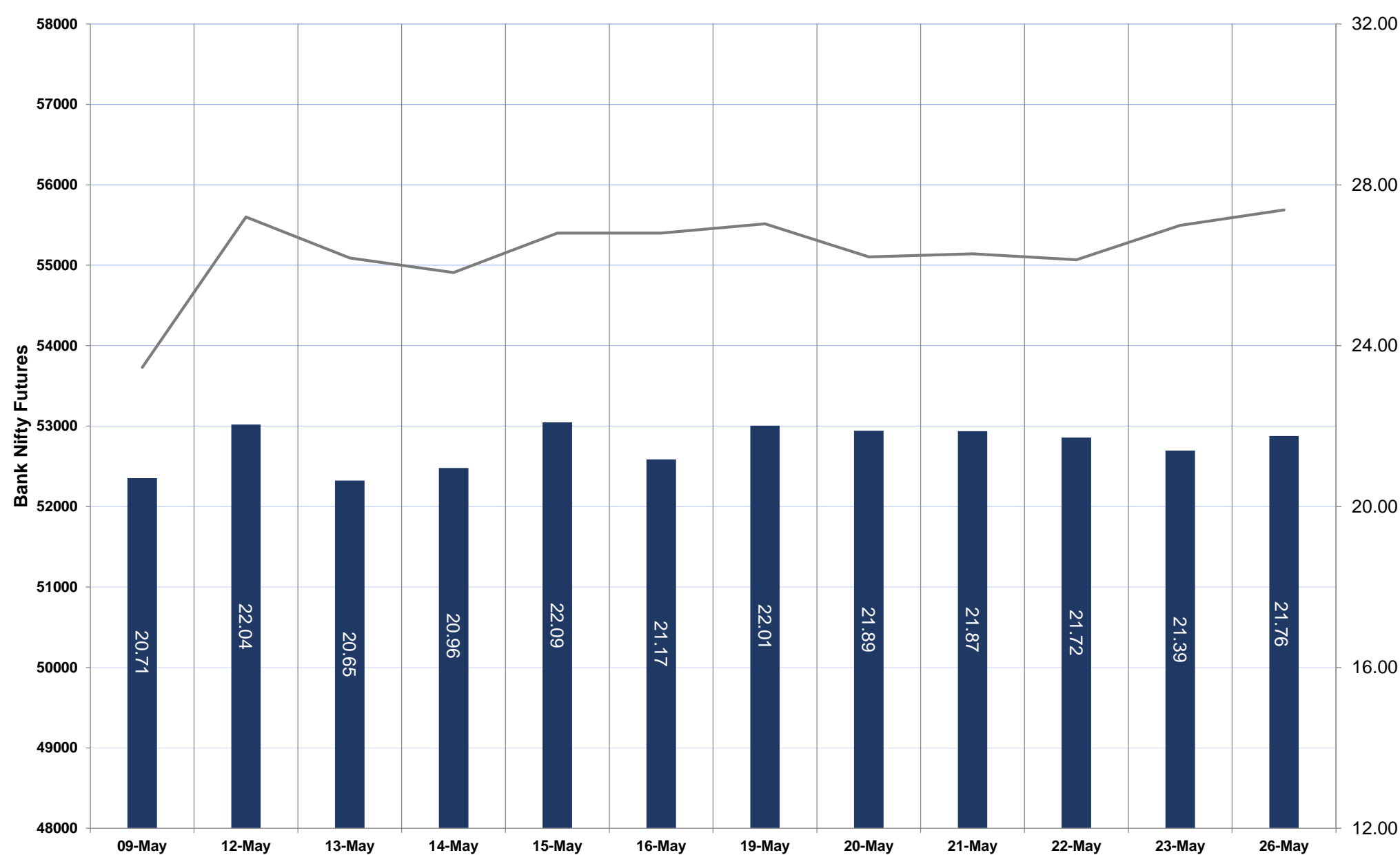
## SPREAD: FUTURE & SPOT



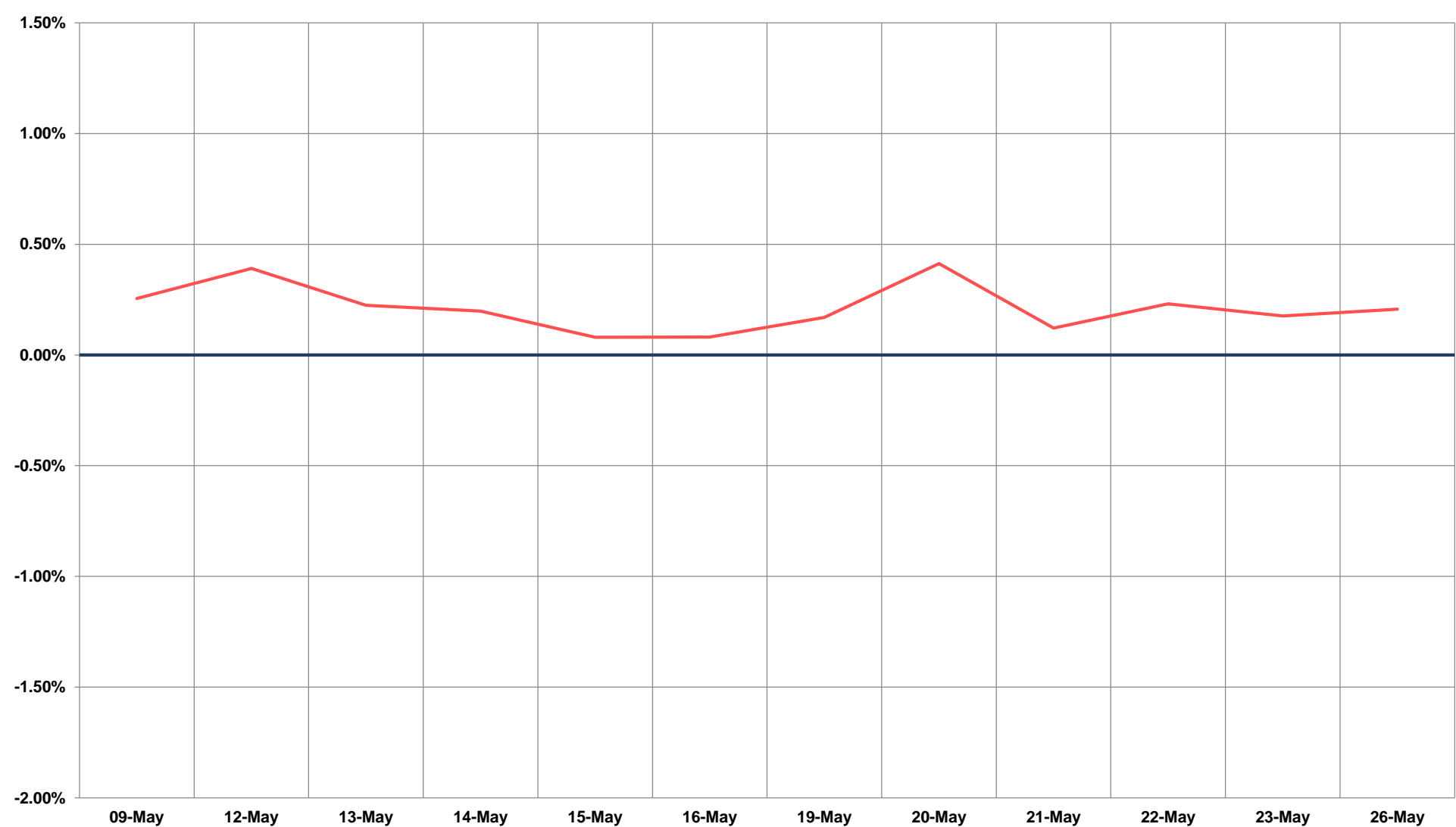
# TECHNICAL VIEWS



## BANK NIFTY FUTURES



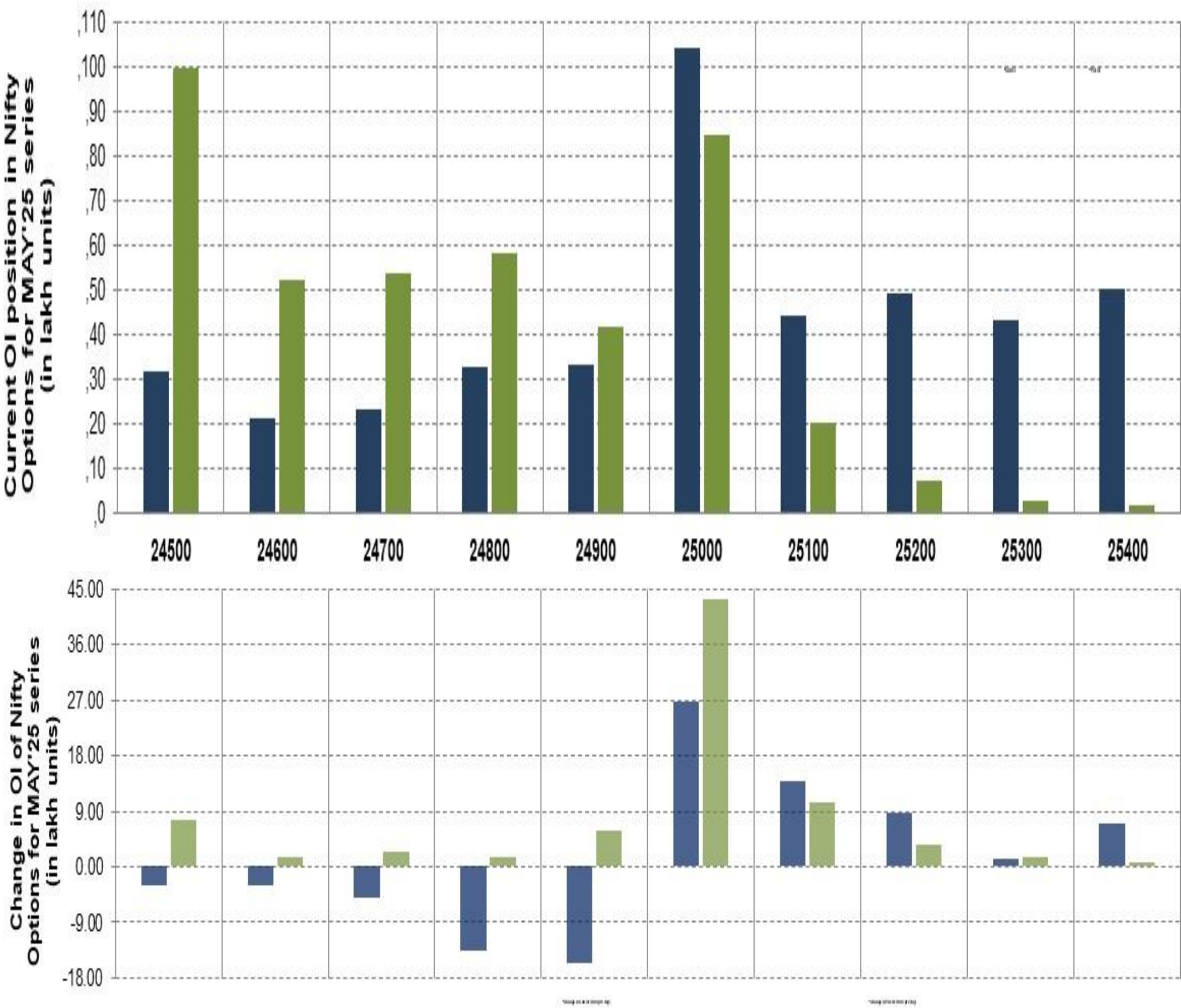
## SPREAD: FUTURE & SPOT







NIFTY OPTIONS



- **Most Active Nifty Call** with an addition of 2.67 million in Open Interests is **Strike Price of 25000**
- **Most Active Nifty Put** with an addition of 4.32 millions in Open Interests is **Strike Price of 25000**
- **Maximum Open Interest an outstanding** was 10.40 millions for Calls at **Strike Price of 25000**
- **Maximum Open Interest an outstanding** was 9.93 millions for puts at **Strike Price of 24500**

# Disclaimer



The Information provided by SMS or in newsletter or in any document has been prepared by Shah Investor's Home Ltd (SIHL). The Information provided by SMS or in newsletter does not constitute an offer or solicitation for the purchase or sale of any financial instrument or as an official confirmation of any transaction. The information contained herein is from publicly available data or other sources believed to be reliable, but we do not represent that it is accurate or complete and it should not be relied on as such. SIHL or any of its affiliates/ group companies shall not be in any way responsible for any loss or damage that may arise to any person from any error in the information contained in this report or SMS. This Information provided by SMS, reports or in newsletter is provided for assistance only and is not intended to be and must not alone be taken as the basis for an investment decision. The user assumes the entire risk of any use made of this information. Each recipient of this Information provided by SMS, report or in newsletter should make such investigation as it deems necessary to arrive at an independent evaluation of an investment in the securities of companies referred to in this information provided by SMS, report or in newsletter (including the merits and risks involved), and should consult his own advisors to determine the merits and risks of such investment. The investment discussed or views expressed may not be suitable for all investors. This information is strictly confidential and is being furnished to you solely for your information.

The information should not be reproduced or redistributed or passed on directly or indirectly in any form to any other person or published, copied, in whole or in part, for any purpose. The information provided by report or SMS is not directed or intended for distribution to, or use by, any person or entity who is a citizen or resident of or located in any locality, state, country or other jurisdiction, where such distribution, publication, availability or use would be contrary to law, regulation or which would subject SIHL and affiliates/ group companies to any registration or licensing requirements within such jurisdiction. The distribution of this Information provided by SMS or in newsletter in certain jurisdictions may be restricted by law, and persons in whose possession this Information provided by SMS or in newsletter comes, should inform themselves about and observe, any such restrictions. The information given or Information provided by SMS, report or in newsletter is as of the date of the issue date of report or the date on which SMS provided and there can be no assurance that future results or events will be consistent with this information. This information is subject to change without any prior notice. SIHL reserves the right to make modifications and alterations to this statement as may be required from time to time. However, SIHL is under no obligation to update or keep the information current.

Nevertheless, SIHL is committed to providing independent and transparent recommendation to its client and would be happy to provide any information in response to specific client queries. Neither SIHL nor any of its affiliates, group companies, directors, employees, agents or representatives shall be liable for any damages whether direct, indirect, special or consequential including lost revenue or lost profits that may arise from or in connection with the use of the information. Past performance is not necessarily a guide to future performance. The disclosures of interest statements incorporated in the Information provided by SMS, report or in newsletter are provided solely to enhance the transparency and should not be treated as endorsement of the views expressed in the report. The analyst for this report certifies that all of the views expressed in this report accurately reflect his or her personal views about the subject company or companies and its or their securities, and no part of his or her compensation was, is or will be, directly or indirectly related to specific recommendations or views expressed in this report.